

EDUCATION & WORKFORCE DEVELOPMENT:

A report from the
Bosch Community Fund



BOSCH

Invented for life



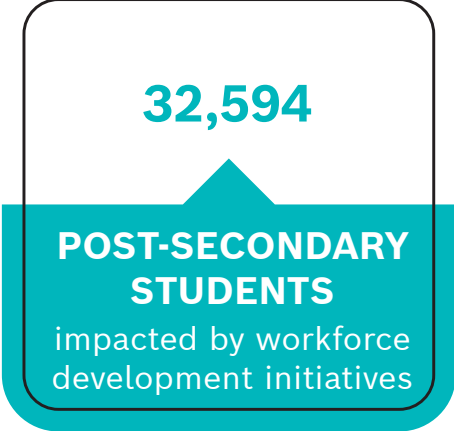
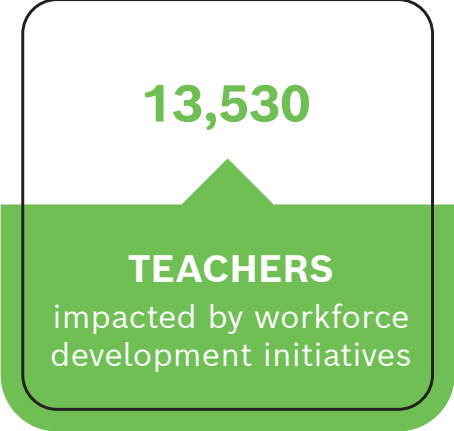
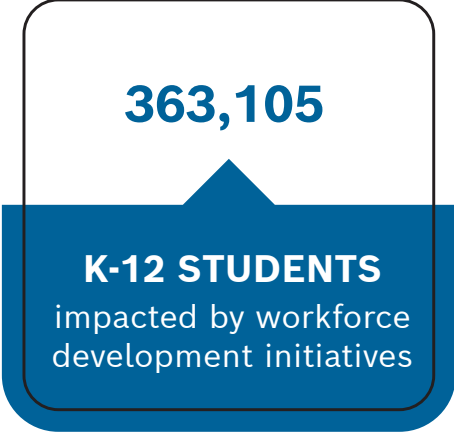
Bosch Community Fund Making Impactful Investments in Workforce Development

For the last decade, the Bosch Community Fund has focused on **advancing** STEM education in North America to **enhance** workforce development programs that increase economic prosperity for local communities and **align** with talent demands at Bosch.

According to a McKinsey global survey, by 2030, an estimated 85 million jobs will go **unfilled** globally due to **skills shortages**, resulting in a loss of \$8.5 trillion in economic revenue.

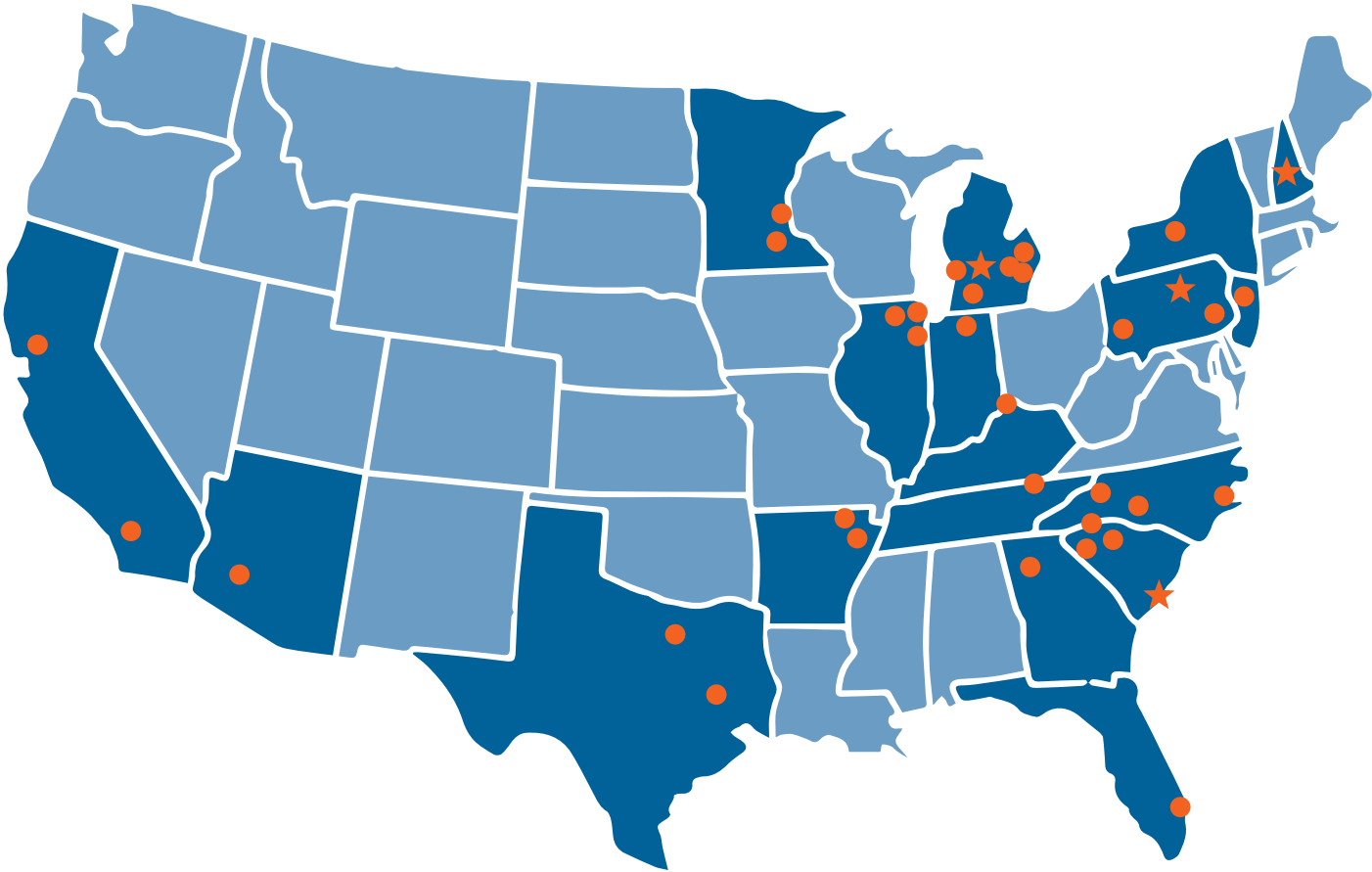
BOSCH COMMUNITY FUND WORKFORCE DEVELOPMENT IMPACT AT-A-GLANCE

Our approach to grant investments is centered on strong community **engagement** and partnerships. By **listening** to local stakeholders about the most pressing issues in their community, the Fund selects the most **impactful** investments.



BOSCH COMMUNITY FUND INVESTMENTS BY STATE

The Bosch Community Fund workforce development investments span over **37 Bosch site locations** and **18 states**, and address local workforce and talent demands in each community.



BOSCH COMMUNITY FUND WORKFORCE INVESTMENT TESTIMONIALS



NATIONAL
Chris Moore, Chief Executive Officer, FIRST

“The Bosch Community Fund support has been instrumental in increasing the accessibility of FIRST programs for youth that open STEM pathways. We are grateful that Bosch employees mentor students and serve as STEM role models. The world of STEM is ever-evolving, but one thing remains consistent: the demand for skilled workers.”



PENNSYLVANIA
Karen Buck, Director, Workforce Initiatives, Manufacturers Resource Center

“With the generosity of the Bosch Community Fund, Manufacturer Resource Center created PA Dream Team career exploration program where educators can request a classroom presentation from a young STEM professional. Students share feedback such as, ‘the presentation opened career options I didn’t even know existed.’”



MICHIGAN
Ron Koehler, Superintendent, Kent Intermediate School District

“The Bosch Community Fund has helped secure STEM equipment and resources to provide world-class educational opportunities related to career development and exploration that prepare students for successful employment. From our advanced manufacturing programs to networking and cyber security, the experience our students gain from working with industry-standard equipment is invaluable.”



SOUTH CAROLINA
Lisa Piccolo, Executive Director, Trident Technical College (TTC) Foundation

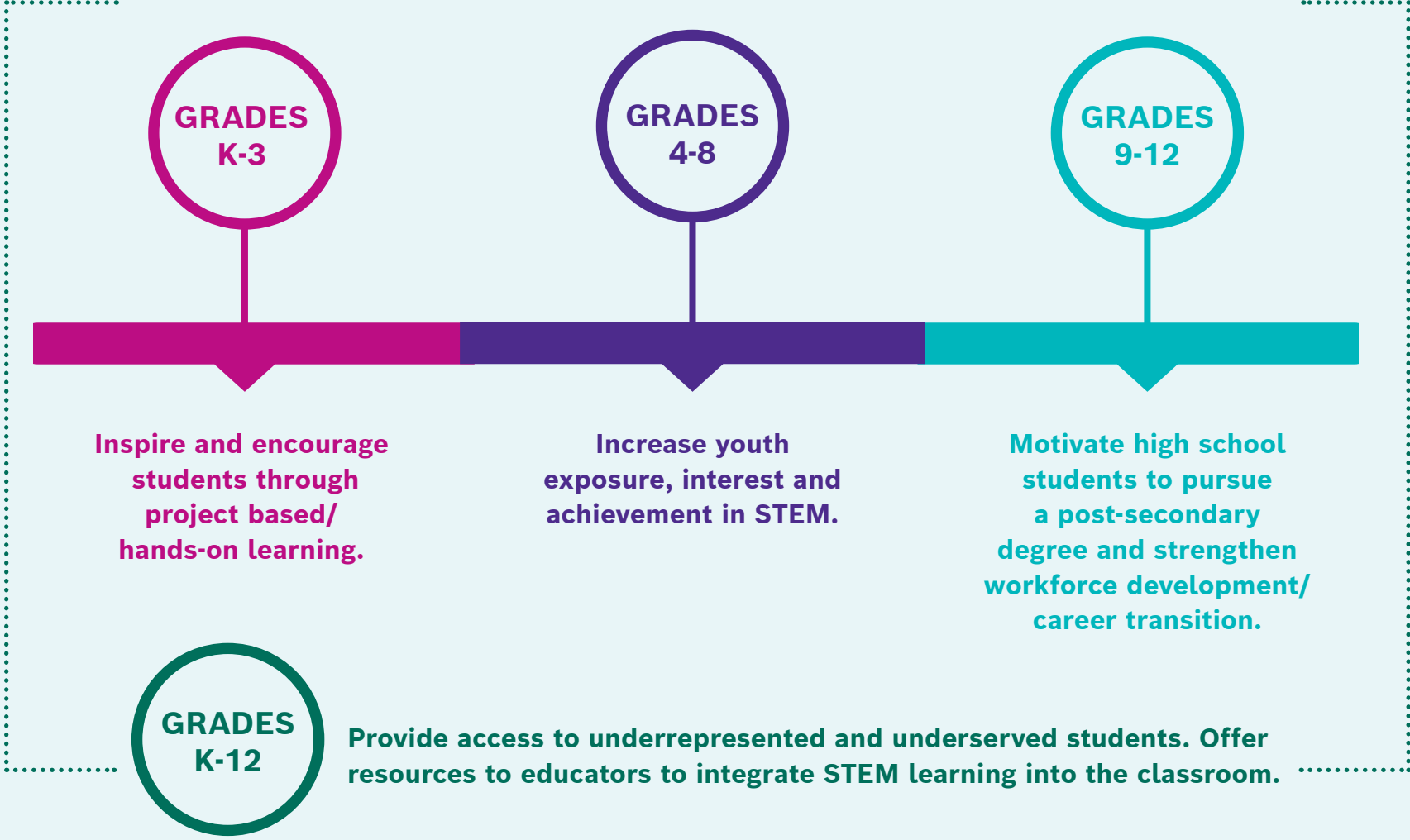
“The investment supports workforce development in the Charleston region through a variety of projects, such as the “Robotics for Building Opportunities for Technicians in STEM” project. Serving middle and high school youth, K-12 teachers, and postsecondary students, the program offers robotic programming, coding, vision and sensor technology to advance STEM education.”



Grant investments along the K-12 continuum provide **essential educational experiences** for students. This connects them to workforce pathways while providing the necessary foundational skills such as, **critical thinking, creativity, communication, and problem solving.**

BOSCH COMMUNITY FUND

INVESTMENTS BY AGE





BOSCH COMMUNITY FUND IS DISRUPTING THE TRENDS: STRATEGIC INVESTMENTS TO SUPPORT KEY TALENT DEMAND

Manufacturing

A 2021 study conducted by Deloitte and the Manufacturing Institute (MI) predicts that 2.1 million manufacturing positions will go unfulfilled by 2030.

Grant Recipients
Manufacturing Resource Center
Trident Technical College

Software Engineer

According U.S. Bureau of Labor Statistics, the software engineer shortage in the USA will increase to almost 1.2 million by 2026.

Grant Recipients
FIRST
Lancaster-Lebanon IU13

Teacher Professional Development

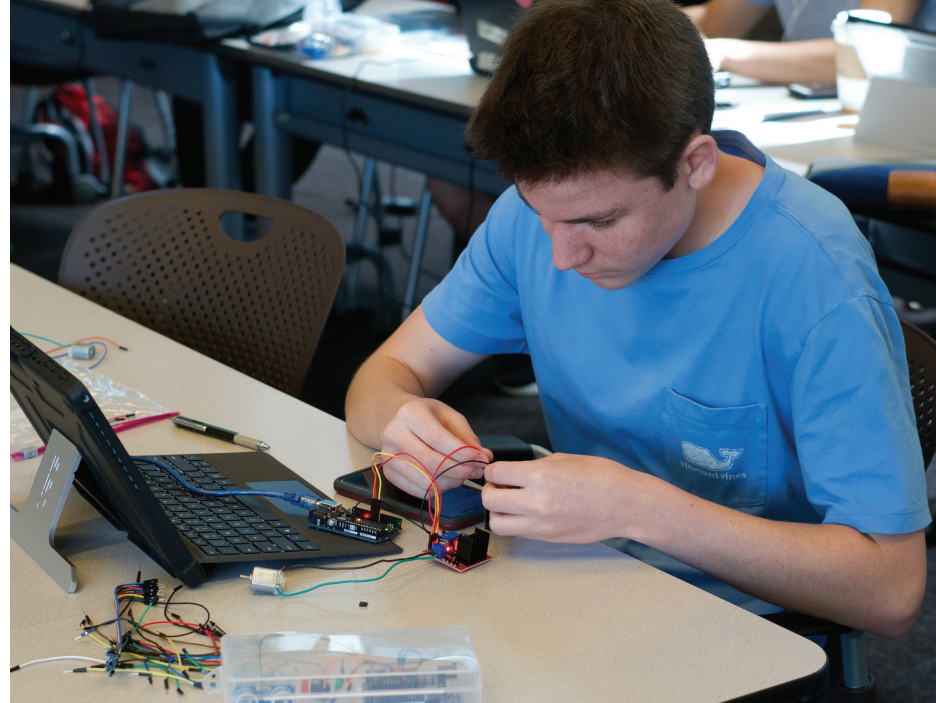
U.S. Department of Education's concluded that student achievement can improve by as much as 21 percentile points as a result of teachers' participation in well-designed professional development programs.

Grant Recipients
STEMersion
Public Education Partners

Career & Technical Education

The Department of Labor reports that while there are 7.6 million unfilled jobs, there are only 6.5 million people looking for work.

Grant Recipients
Wayne RESA
Lincoln Economic Development Association



Bosch Community Fund

For more information on the **Bosch Community Fund** and our workforce development **initiatives**, visit our website.



www.bosch.us/our-company/social-responsibility